



K3TL
KIRLOSKAR BROTHERS (THAILAND) LIMITED
SUSTAINABLE SMART PUMPING SOLUTIONS

PUMP STOCK LIST

SPP PUMPS ASIA / KIRLOSKAR BROTHERS THAILAND



OUR GROUP COMPANY



U.K.



U.S.A.



India



The Netherlands

SUBSIDIARY COMPANY OF KIRLOSKAR BROTHERS LIMITED

REGD. OFFICE: 50 SUKHUMVIT 21 ROAD (ASOKE), GMM GRAMMY PLACE OFFICE BUILDING, 18 FL,

UNIT 1805, KHLONGTOEY-NUA, WATTANA, BANGKOK-10110, THAILAND.

TEL.: + 66 2 661 8272-4, + 66 2 026 3585 FAX: + 66 2 661 8282

EMAIL: ASK@KIRLOSKAR.CO.TH WEBSITE: WWW.KIRLOSKARTHAILAND.COM

CIN NO.: 0105550124075





“Please find the attached details for the current Pump stock list and lead times. KBTL & SPP Asia stocks over 500 pumps catering to Building & Construction, Fire (NFPA20), Industry, Water, Oil & Gas and Power Utility market. This includes Horizontal Split Case, End Suction, Multistage and Vertical Inline multistage pumps.”



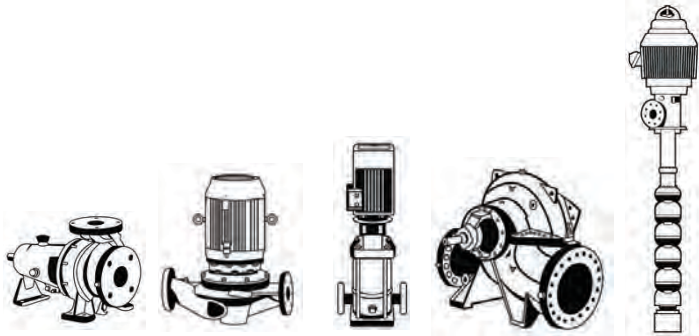
STOCK THAILAND

Pump Type	Models	Standard Lead Time
<ul style="list-style-type: none"> Horizontal Split Case End Suction Multistage Vertical Inline multistage 	<ul style="list-style-type: none"> iHT (F), UP, SCT, DSM KPD, KPD-QF, DB, CPHM, CE, MF RKB, RKBF, KBSH SMVR, SMVS 	<ul style="list-style-type: none"> 3-5 Days – FCA Thailand 3-5 Days – FCA Thailand 3-5 Days – FCA Thailand 3 Days – FCA Thailand

“Lead times above are indicated for bare shaft stock pumps based on standard manufacturing process including order entry, engineering and procurement and manufacturing. Lead times are generally defined

by longest lead time component.

When pump-sets are to be ordered lead time shall depend on lead time of buyout items and delivery should be confirmed in advance of order by your Account Manager.”



SCT Series

Horizontal Split Case Pumps **Water**
Applications



UP Series

Horizontal Split Case Pumps **Water**
Applications



i-HT(F), TQ Series

Horizontal Split Case Pumps **Fire**
Applications



No.	Pump Model	KBTL Stock	Stock In Transit	KBL Stock
1	SCT/THRU 80/30 MOC 39 Cast Iron/Bronze/SS410/GP	1	-	-
2	SCT/THRU 100/30 MOC 39 (CI/BR/SS410) GP	2	-	-
3	SCT/THRU 125/29 MOC 43+Coating Cast Iron/Bronze/SS410/GP	1	-	-
4	SCT/THRU 125/30 MOC 39 Cast Iron/Bronze/SS410/GP	2	-	-
5	SCT/THRU 125/30 MOC 39 Cast Iron/Bronze/SS410/MS CW	3	-	-
6	SCT/THRU 150/38 MOC 39 Cast Iron/Bronze/SS410/GP	2	-	-
7	SCT/THRU 150/38 MOC 39 Cast Iron/Bronze/SS410/MS	2	-	-
8	SCT/THRU 150/48 MOC 39 Cast Iron/Bronze/SS410/GP	2	-	-
9	SCT/THRU 200/38 MOC 39 Cast Iron/Bronze/SS410/GP	1	-	-
10	SCT/THRU 200/48 MOC39 (CI/BR/SS410)MS CW	2	-	-
11	SCT/THRU 250/30 (37-CI/BR/SS304) MS CW	2	-	-
12	SCT/THRU 250/38 MOC39 (CI/BR/SS410)MS CW	2	-	-
13	SCT/THRU 250/30 MOC 39 Cast Iron/Bronze/SS410/GP	1	-	-
14	SCT/THRU 250/40 MOC 39 Cast Iron/Bronze/SS410/ MS	2	-	-
15	SCT 300/59 MOC 39 Cast Iron/Bronze/SS410/GP	1	-	-
16	SCT 350/44 MOC 39 Cast Iron/Bronze/SS410/GP	1	-	-
1	UP 100/35 MOC 40 Coating Cast Iron/Bronze/SS410/GP	1	-	-
2	UP 125/30A MOC 39 Cast Iron/Bronze/SS410/MS	1	-	-
3	UP 125/30B MOC 40+Coating Cast Iron/Bronze/SS410/GP	2	-	-
4	UP 150/30 MOC 40 Coating Cast Iron/Bronze/SS410/GP	3	-	-
5	UP 150/38A MOC 40 Coating Cast Iron/Bronze/SS410/GP	2	-	-
6	UP 150/38B MOC 40 Coating Cast Iron/Bronze/SS410/GP	2	-	-
7	UP 200/30 MOC 40 Coating Cast Iron/Bronze/SS410/GP	2	-	-
8	UP 200/38 MOC 40 Coating Cast Iron/Bronze/SS410/GP	1	-	-
9	UP 250/30 MOC 39 Cast Iron/Bronze/SS410/MS	2	-	-
10	UP 250/30 MOC 39 Cast Iron/Bronze/SS410/GP	2	-	-
11	UP 250/33 MOC 16 Cast Iron/Cast Iron/SS410/GP	1	-	-
12	UP 400/67 MOC 16 Cast Iron/Cast Iron/SS410/GP	2	-	-
13	UP 500/68 MOC39 (CI/BR/SS410)GP PN16 CCW	2	-	-
1	i-HT15DA MOC 01 Cast Iron/Bronze/SS431/GP	1	-	-
2	i-HT10DA(F) MOC 95 Cast Iron/Bronze/CS/GP	4	-	-
3	i-HT10DE(F) MOC 95 Cast Iron/Bronze/CS/GP	9	-	-
4	i-HT10DE(F) MOC 96 Cast Iron/Bronze/SS410/GP	8	-	-
5	i-HT10ED(F) MOC 95 Cast Iron/Bronze/CS/GP	7	-	-
6	i-HT12CG(F) MOC 95 Cast Iron/Bronze/CS/GP	1	-	-
7	i-HT12DF(F) MOC 95 Cast Iron/Bronze/CS/GP	4	-	-
8	i-HT15DF(F) MOC 95 Cast Iron/Bronze/CS/GP	1	-	-
9	i-HT15DF(F) MOC 96 Cast Iron/Bronze/SS410/GP	5	-	-
10	i-HT15XE(F) MOC 95 Cast Iron/Bronze/CS/GP	2	-	-
11	i-HT15XE(F) MOC 96 Cast Iron/Bronze/SS410/GP	1	-	-

SRZS Series

Horizontal Multistage Pumps **Water**
& **Boiler Feed** Applications



RKB Series

Horizontal Multistage Pumps **Water**
& **Boiler Feed** Applications



DB Series

End Suction Pumps
Conforming to DIN 24255



No.	Pump Model	KBTL Stock	Stock In Transit	KBL Stock
12	i-HT15XF(F) MOC 95 Cast Iron/Bronze/CS/GP	6	-	-
13	i-HT15XF(F) MOC 96 Cast Iron/Bronze/SS410/GP	5	-	-
14	i-HT20DD(F) MOC 95 Cast Iron/Bronze/CS/GP	1	-	-
15	i-HT20ED(F) MOC 95 Cast Iron/Bronze/CS/GP	1	-	-
16	i-HT20ED(F) MOC 96 Cast Iron/Bronze/SS410/GP	1	-	-
17	i-HT20FD(F) MOC 96 Cast Iron/Bronze/SS410/GP	1	-	-
18	i-HT20FF(F) MOC 96 Cast Iron/Bronze/SS410/GP	1	-	-
1	SERO SRZS 668 W LPG G12V-HK-AQ1VGG/I.60 MOC 60 GGG40.3/Brass/1.4021/MS	2	-	-
1	RKB 32/9E_10 stages MOC 01 Cast Iron/Cast Iron/CS/GP	2	-	-
2	RKB 65/19E_7 stages MOC 01 Cast Iron/Cast Iron/CS/GP	2	-	-
3	RKB 65/19E_9 stages MOC 10 WCB/WCB/SS410/GP	2	-	-
4	RKB 65/19L_9 stages MOC 10 WCB/WCB/SS410/GP	1	-	-
5	RKB 65/19LM_10 stages MOC 13 CF8M/CF8M/SS316/GP	1	-	-
6	RKBF 125/27_4 stages WCB/WCB/SS431/GP	1	-	-
7	RKB 150/34_4 stages MOC 01 Cast Iron/Cast Iron/CS/GP	2	-	-
8	RKB 150/34_6 stages MOC 01 Cast Iron/Cast Iron/CS/GP	2	-	-
9	RKBV 50/15L_10 stages MOC 61 Cast Iron/Bronze/SS410/GP	2	-	-
10	RKBV 65/19LM_10 stages Cast Iron/Bronze/SS304/MS	1	-	-
1	DB 32/13 MOC 56 Cast Iron/Bronze/SS410/GP	1	-	-
2	DB 32/13 MOC 88 Cast Iron/Bronze/SS410/MS	16	-	-
3	DB 32/16 MOC 88 Cast Iron/Bronze/SS410/MS	2	-	-
4	DB 32/20 MOC 88 Cast Iron/Bronze/SS410/MS	17	-	-
5	DB 32/26 MOC 56 Cast Iron/Bronze/SS410/GP	2	-	-
6	DB 32/26 MOC 88 Cast Iron/Bronze/SS410/MS	11	-	-
7	DB 40/13 MOC 88 Cast Iron/Bronze/SS410/MS	9	-	-
8	DB 40/16 MOC 88 Cast Iron/Bronze/SS410/MS	1	-	-
9	DB 40/16xe MOC 56 Cast Iron/Bronze/SS410/MS	1	-	-
10	DB 40/16B MOC 88 Cast Iron/Bronze/SS410/MS	5	-	-
11	DB 40/20 MOC 88 Cast Iron/Bronze/SS410/MS	4	-	-
12	DB 40/26 MOC 88 Cast Iron/Bronze/SS410/MS	14	-	-
13	DB 40/26B MOC 88 Cast Iron/Bronze/SS410/MS	9	-	-
14	DB 50/13 MOC 88 Cast Iron/Bronze/SS410/MS	21	-	-
15	DB 50/26 Cast Iron/Bronze/CS/GP	2	-	-
16	DB 50/26 MOC 56 Cast Iron/Bronze/SS410/GP	3	-	-
17	DB 50/26 MOC 88 Cast Iron/Bronze/SS410/MS	8	-	-
18	DB 50/26B MOC 88 Cast Iron/Bronze/SS410/MS	9	-	-
19	DB 65/13 MOC 88 Cast Iron/Bronze/SS410/MS	17	-	-
20	DB 65/16 MOC 88 Cast Iron/Bronze/SS410/MS	8	-	-
21	DB 65/20 MOC 56 CI/BR/SS410/MS	2	-	-

DB Series

End Suction Pumps

Conforming to DIN 24255



No.	Pump Model	KBTL Stock	Stock In Transit	KBL Stock
22	DB 65/20 MOC 88 Cast Iron/Bronze/SS410/MS	10	-	-
23	DB 65/26 MOC 56 Cast Iron/Bronze/SS410/MS	4	-	-
24	DB 65/26 MOC 88 Cast Iron/Bronze/SS410/MS	20	-	-
25	DB 65/32 MOC 56 Cast Iron/Bronze/SS410/GP	1	-	-
26	DB 80/16 MOC 88 Cast Iron/Bronze/SS410/MS	21	-	-
27	DB 80/32 MOC 88 Cast Iron/Bronze/SS410/MS	6	-	-
28	DB 100/20 MOC 56 Cast Iron/Bronze/SS410/GP	2	-	-
29	DB 100/20B MOC 88 Cast Iron/Bronze/SS410/MS	5	-	-
30	DB 100/26 MOC 56 Cast Iron/Bronze/SS410/GP	1	-	-
31	DB 100/26 MOC 88 Cast Iron/Bronze/SS410/MS	2	-	-
32	DB 100/26B MOC 88 Cast Iron/Bronze/SS410/MS	5	-	-
33	DB 100/26C MOC 88 Cast Iron/Bronze/SS410/MS	5	-	-
34	DB 100/32 MOC 88 Cast Iron/Bronze/SS410/MS	3	-	-
35	DB 100/40 MOC 58 Cast Iron/Bronze/SS410/MS	1	-	-
36	DB 125/40 MOC 88 Cast Iron/Bronze/SS410/MS	1	-	-
37	DB 150/26 Cast Iron/Bronze/SS410/MS	4	-	-
38	DB 150/26 MOC 43 Cast Iron/Bronze/SS410/GP	2	-	-
39	DB 150/26 MOC 43+Coating Cast Iron/Bronze/SS410/GP	3	-	-
40	DB 150/40 MOC 16 Cast Iron/Cast Iron/SS410/MS	2	-	-
41	DB 150/40 MOC 88 Cast Iron/Bronze/SS410/MS	2	-	-
42	DB 200/33 Cast Iron+Bronze/Bronze/SS410/GP	3	-	-
43	DB 200/33 MOC 43 Cast Iron/Bronze/SS410/MS	1	-	-
44	DB 200/33B MOC 02 Cast Iron/Bronze/CS/GP	1	-	-
45	DB 300/34 MOC 16 Cast Iron/Cast Iron/SS410/GP	10	-	-
46	DB 125/26xe MOC 16 Cast Iron/Cast Iron/SS410/GP	2	-	-
47	DB 250/33A MOC 16 Cast Iron/Cast Iron/SS410/GP	6	-	-
1	CE 100/16 MOC 07 Cast Iron/Bronze/SS410/GP	1	-	-
2	CE 100/32 MOC 07+Coating Cast Iron/Bronze/SS410/GP	2	-	-
3	CE 125/26 MOC 07+Coating Cast Iron/Bronze/SS410/GP	2	-	-
4	CPHM 80/26 MOC 46 Cast Iron/Bronze/SS410/GP	1	-	-
5	CPHM 80/32 MOC 43 Cast Iron/Bronze/SS410/GP PN16FF	3	-	-
6	CPHM 125/40 MOC 46 Cast Iron/Bronze/SS410/GP PN16FF	3	-	-
7	CPHM 150/40 MOC 46 Cast Iron/Bronze/SS410/GP PN16FF	3	-	-
8	CPHM 200/38M MOC 46 Cast Iron/Bronze/SS410/GP PN16FF	2	-	-
9	SHM 80/40NM MOC S5 CA6NM/CA6NM/SS410/GP	1	-	-
10	SHM 100/32Q MOC 13 CF8M/CF8M/SS316/GP	4	-	-
1	KPD 32/13 MOC 59 Cast Iron/CF8M/SS410/GP	2	-	-
2	KPD 32/16 MOC 59 Cast Iron/CF8M/SS410/GP	1	-	-
3	KPD 32/20 MOC 59 Cast Iron/CF8M/SS410/GP	6	-	-
4	KPD 32/26 MOC 24 CA15/CA15/AISI4140/GP	3	-	-

CE,CPHM,MF, SHM Series

End Suction Pumps Various



KPD Series

End Suction Pumps **Various**



No.	Pump Model	KBTL Stock	Stock In Transit	KBL Stock
5	KPD 32/26 MOC 59 Cast Iron/CF8M/SS410/GP	3	-	-
6	KPD 40/13 MOC 59 Cast Iron/CF8M/SS410/GP	6	-	-
7	KPD 40/20 MOC 59 Cast Iron/CF8M/SS410/GP	4	-	-
8	KPD 40/26 MOC 37 R55/R55/Hastelloy C22/GP	1	-	-
9	KPD 40/26 MOC 59 Cast Iron/CF8M/SS410/GP	4	-	-
10	KPD 40/26 MOC 72 CF8M/CF8M/SS316/GP	5	-	-
11	KPD 50/26 MOC 72 CF8M/CF8M/SS316/GP	1	-	-
12	KPD 65/13 MOC 59 Cast Iron/CF8M/SS410/GP	4	-	-
13	KPD 65/13 MOC 72 CF8M/CF8M/SS316/GP	1	-	-
14	KPD 65/16 MOC 72 CF8M/CF8M/SS316/GP	1	-	-
15	KPD 65/26 MOC 11 Cast Iron/CF8M/AISI4140/GP	2	-	-
16	KPD 65/26N MOC 72 CF8M/CF8M/SS316/GP	2	-	-
17	KPD 65/32 MOC 12+SPL WCB/BRONZE/AISI4140/GP	2	-	-
18	KPD 65/43 MOC 11 Cast Iron/CF8M/AISI4140/GP	1	-	-
19	KPD 80/26 MOC 37 R55/R55/Hastelloy C22/MS	1	-	-
20	KPD 80/32 MOC 37 R55/R55/Hastelloy C22/MS	1	-	-
21	KPD 80/40 MOC 13 CF8M/CF8M/SS316/GP	1	-	-
22	KPD 100/20 MOC 72 CF8M/CF8M/SS316/GP	1	-	-
23	KPD 100/26 MOC 37 R55/R55/Hastelloy C22/GP	1	-	-
24	KPD 100/40 MOC 13 CF8M/CF8M/SS316/GP	8	-	-
25	KPD 100/40 MOC 72 CF8M/CF8M/SS316/GP	4	-	-
26	KPD 125/26 (1450) MOC 72 CF8M/CF8M/SS316/GP	2	-	-
27	KPD 125/26 MOC 53 WCB/WCB/SS410/GP	1	-	-
28	KPD 125/32 (1450) MOC 72 CF8M/CF8M/SS316/GP	4	-	-
29	KPD 125/40 MOC 13 CF8M/CF8M/SS316/GP	2	-	-
30	KPD 125/40 MOC 37 R55/R55/Hastelloy C22/MS	1	-	-
31	KPD 125/40 MOC 72 CF8M/CF8M/SS316/GP	1	-	-
32	KPD 125/45 MOC 72 CF8M/CF8M/SS316/GP	2	-	-
33	KPD 150/43 MOC 13 CF8M/CF8M/SS316/GP	4	-	-
1	KPD 25/16QF MOC 43 Cast Iron/Bronze/SS410/GP	1	-	-
2	KPD 40/32QF MOC 24 CA15/CA15/AISI4140/GP	1	-	-
3	KPD 50/32QF MOC 24 CA15/CA15/AISI4140/GP	1	-	-
4	KPD 100/32QF MOC 72 CF8M/CF8M/SS316/GP	2	-	-
5	KPD 100/40QF MOC 72 CF8M/CF8M/SS316/GP	1	-	-
6	KPD 125/26QF MOC 72 CF8M/CF8M/SS316/GP	2	-	-
1	GK 100/32B MOC 02 Cast Iron/Bronze/CS/GP	1	-	-
2	GK 125/32B MOC 02 Cast Iron/Bronze/CS/GP	2	-	-
3	GK(P) 100/20 MOC 74 (CF3M/CF3M/SS316L) w/o Mechanical Seal	5	-	-
4	GK(P) 100/26 MOC 74 (CF3M/CF3M/SS316L) w/o Mechanical Seal	2	-	-
5	GK(P) 65/13 MOC 74 (CF3M/CF3M/SS316L) w/o Mechanical Seal	5	-	-
6	GK(P) 80/16 MOC 74 (CF3M/CF3M/SS316L) w/o Mechanical Seal	3	-	-

KPD-QF Series

End Suction Pumps **Semi-Open Impeller Pumps**



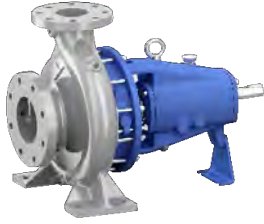
GK(P) Series

Process Industries Pumps



GK(P) Series

Process Industries Pumps

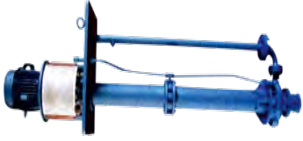


Vertical Multistage Inline Pumps



No.	Pump Model	KBTL Stock	Stock In Transit	KBL Stock
7	GK(P) 100/16 MOC 74 (CF3M/CF3M/SS316L) w/o Mechanical Seal	3	-	-
8	GK(P) 80/20 MOC 74 (CF3M/CF3M/SS316L) w/o Mechanical Seal	4	-	-
9	GK(P) 80/26 MOC 74 (CF3M/CF3M/SS316L) w/o Mechanical Seal	2	-	-
10	GK(P) 65/16 MOC 74 (CF3M/CF3M/SS316L) w/o Mechanical Seal	5	-	-
11	GK(P) 65/20 MOC 74 (CF3M/CF3M/SS316L) w/o Mechanical Seal	4	-	-
12	GK(P) 40/13 MOC 74 (CF3M/CF3M/SS316L) w/o Mechanical Seal	5	-	-
13	GK(P) 50/13 MOC 74 (CF3M/CF3M/SS316L) w/o Mechanical Seal	4	-	-
14	GK(P) 32/16 MOC 74 (CF3M/CF3M/SS316L) w/o Mechanical Seal	5	-	-
15	GK(P) 50/26 MOC 74 (CF3M/CF3M/SS316L) w/o Mechanical Seal	3	-	-
16	GK(P) 40/16 MOC 74 (CF3M/CF3M/SS316L) w/o Mechanical Seal	4	-	-
17	GK(P) 32/13 MOC 74 (CF3M/CF3M/SS316L) w/o Mechanical Seal	3	-	-
18	GK(P) 40/20 MOC 74 (CF3M/CF3M/SS316L) w/o Mechanical Seal	2	-	-
19	GK(P) 32/20 MOC 74 (CF3M/CF3M/SS316L) w/o Mechanical Seal	3	-	-
20	GK(P) 50/32 MOC 74 (CF3M/CF3M/SS316L) w/o Mechanical Seal	1	-	-
21	GK(P) 65/26 MOC 74 (CF3M/CF3M/SS316L) w/o Mechanical Seal	1	-	-
22	GK(P) 50/16 MOC 74 (CF3M/CF3M/SS316L) w/o Mechanical Seal	1	-	-
1	SMVR 2-6 SS304 IE2/380-415V/50HZ/0.75 kW	2	-	-
2	SMVR 2-13 SS304 IE2/380-415V/50HZ/1.5 kW	1	-	-
3	SMVR 4-9 SS304 IE2/380-415V/50HZ/2.2 kW	2	-	-
4	SMVR 4-14 SS304 IE2/380-415V/50HZ/3 kW	1	-	-
5	SMVR 4-14 SS304 IE2/380-415V/50HZ/3 kW	5	-	-
6	SMVR 4-15 SS304 IE2/380-415V/50HZ/3 kW	4	-	-
7	SMVR 4-16 SS304 IE2/380-415V/50HZ/3 kW	2	-	-
8	SMVR 5-6 SS304 IE2/380-415V/50HZ/1.1 kW	2	-	-
9	SMVR 5-24 SS304 IE2/380-415V/50HZ/4 kW	1	-	-
10	SMVR 10-5 SS304 IE2/380-415V/50HZ/2.2 kW	2	-	-
11	SMVR 10-9 SS304 IE2/380-415V/50HZ/3 kW	2	-	-
12	SMVR 10-10 SS304 IE2/380-415V/50HZ/4 kW	1	-	-
13	SMVR 10-12 SS304 IE2/380-415V/50HZ/4 kW	3	-	-
14	SMVR 10-14 SS304 IE2/380-415V/50HZ/5.5kW	1	-	-
15	SMVR 10-16 SS304 IE2/380-415V/50HZ/5.5kW	2	-	-
16	SMVR 15-3 SS304 IE2/380-415V/50HZ/3 kW	1	-	-
17	SMVR 15-8 SS304 IE2/380-415V/50HZ/7.5 kW	2	-	-
18	SMVR 20-2 SS304 IE2/380-415V/50HZ/2.2 kW	2	-	-
19	SMVR 20-3 SS304 IE2/380-415V/50HZ/4 kW	2	-	-
20	SMVR 20-6 SS304 IE2/380-415V/50HZ/7.5 kW	1	-	-
21	SMVR 20-7 SS304 IE2/380-415V/50HZ/7.5 kW	2	-	-
22	SMVR 20-8 SS304 IE2/380-415V/50HZ/11 kW	2	-	-
23	SMVR 32-3 SS304 IE2/380-415V/50HZ/5.5 kW	2	-	-
24	SMVR 45-2 SS304 IE2/380-415V/50HZ/7.5 kW	2	-	-

Vertical Sump Pump



Vertical Turbine Pump



Controller



Coupling



No.	Pump Model	KBTL Stock	Stock In Transit	KBL Stock
25	SYVR 5-22 SS304 IE2/380-415V/50HZ/4 kW	1	-	-
26	KCIL 2-12 SS304 IE2/380-415V/50HZ/1.5 kW	1	-	-
1	KPDS 100/32 Cast Iron/Cast Iron/CS/GP	1	-	-
2	KPDS 100/40DV Cast Iron/Cast Iron/CS/GP	2	-	-
1	VEP20C_6ST_Hollow Shaft_3.5m Pump length Cast Iron/Bronze/SS416/GP	1	-	-
2	VEP21C_4ST_Hollow Shaft_3.5m Pump length Cast Iron/Bronze/SS416/GP	3	-	-
3	VEP24A_5ST_Hollow Shaft_3.5m Pump length Cast Iron/Bronze/SS416/GP	2	-	-
4	VEP24C_5ST_Hollow Shaft_3.5m Pump length Cast Iron/Bronze/SS416/GP	2	-	-
5	VEP24C_6ST_Hollow Shaft_3.5m Pump length Cast Iron/Bronze/SS416/GP	1	-	-
6	VEP26C_4ST_Hollow Shaft_3.5m Pump length Cast Iron/Bronze/SS416/GP	2	-	-
1	Control Panel INJUNGTECH INJ-7000/3.7kW	3	-	-
2	Control Panel INJUNGTECH INJ-7000/7.5kW	7	-	-
3	Firetrol FTA550F-AG020B-G 20HP 440V NEMA12	2	-	-
4	Firetrol FTA560F-AG002F 2HP 380V NEMA 2	1	-	-
5	Firetrol FTA560E-AA006F 5.5HP 380V NEMA2	3	-	-
6	Firetrol FTA560F-AG010F 10HP 380V NEMA 2	11	-	-
7	Firetrol FTA570F-AG004F 4HP 380V NEMA 2	7	-	-
8	Firetrol FTA570F-AG010F 10HP 380V NEMA 2	7	-	-
9	Firetrol FTA1100-JL12N-BA 12VDC NEMA 2	8	-	-
10	Firetrol FTA1100-JL12N-BA-U 12VDC NEMA3	1	-	-
11	Firetrol FTA1100-JL12N-BA-G 12VDC NEMA12	1	-	-
12	Firetrol FTA1300-AM100FZ 100HP380V NEMA2	1	-	-
13	TORNATECH GPD-12VDC-220VAC NEMA 2	24	-	-
14	TORNATECH GPD-24VDC-220VAC NEMA 2	8	-	-
15	TORNATECH JP3-380V/4HP/3PH/50HZ NEMA 2	7	-	-
16	TORNATECH JP3-380/5.5HP/3PH/50HZ NEMA 2	9	-	-
17	TORNATECH JP3-380V/7.5HP/3PH/50HZ NEMA 2	5	-	-
1	Flender H 100/140	1	-	-
2	Rathi L 095	4	-	-
3	Rathi L 100	8	-	-
4	Rathi L 110	19	-	-
5	Rathi L 150	7	-	-
6	Rathi L 190	5	-	-
7	Rathi L 225	11	-	-
8	Rathi LM35/140 Hub I/II	1	-	-
9	Rathi REM165/140 Hub I/II	8	-	-
10	Rathi RLM220/180 Hub II/II	1	-	-
11	Rathi RB 105-3	26	-	-
12	Rathi RB 116-4	9	-	-

Coupling



No.	Pump Model	KBTL Stock	Stock In Transit	KBL Stock
13	Rathi RB 144-6	4	-	-
14	Rathi RB 162-6	10	-	-
15	Rathi RB 178-6	10	-	-
16	Rathi RB 198-10	7	-	-
17	Rathi RB 228-11	9	-	-
18	Rathi RB 252-12	2	-	-
19	Rathi RB 285-11	2	-	-
20	Rathi RB 320-12	2	-	-
21	Rathi RB 360-11	2	-	-
22	Rathi RB 400-10	2	-	-
23	Rathi RB 450-12	2	-	-
24	Rathi RRS 95/140	17	-	-
25	Rathi RRL 100/140	10	-	-
26	Rathi RRL 110/180	2	-	-
27	Rathi RRL 150/140	21	-	-
28	Rathi RRL 150/180	2	-	-
29	Rathi RRL 190/140	17	-	-
30	Rathi RRL 190/180	2	-	-
31	Rathi RRL 225/140	9	-	-
32	Rathi RRL 225/180	2	-	-
33	Rathi RRS 100/140	22	-	-
34	Rathi RRS 110/140	10	-	-
35	Rathi RST 30-TO11/180	4	-	-
36	Rathi SW 226	8	-	-
37	Rathi SW 276	10	-	-
38	Rathi SW 280	10	-	-
39	Rathi SW 295	10	-	-
40	Rathi SW 2955	2	-	-
41	Rathi SW 300	2	-	-
42	Rathi SW 350	2	-	-
43	Rathi SWQ 226/140	5	-	-
44	Rathi SWQ 226/180	7	-	-
45	Rathi SWQ 276/140	10	-	-
46	Rathi SWQ 276/180	2	-	-
47	Rathi SWQ 280/140	5	-	-
48	Rathi SWQ 280/180	5	-	-
49	Rathi SWQ 295/140	13	-	-
50	Rathi SWQ 295/180	7	-	-
51	Rathi SWQ 2955/140	5	-	-
52	Rathi SWQ 2955/180	6	-	-
53	Rathi SWQ 300/140	2	-	-
54	Rathi SWQ 300/180	2	-	-
55	Rathi SWQ 350/140	2	-	-
56	Rathi SWQ 350/180	2	-	-

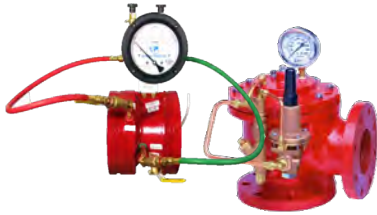
Diesel Engine



Electric Motor



Fire Accessories



No.	Pump Model	KBTL Stock	Stock In Transit	KBL Stock
57	Rathi T4	2	-	-
58	Rathi T5	5	-	-
59	Rathi T6	6	-	-
60	Rathi TO7	5	-	-
61	Rathi TO8	5	-	-
62	Rathi TO9	5	-	-
63	Rathi TO10	8	-	-
64	Rathi TO11	2	-	-
1	CLARKE UL/FM JU4H-UF40 (HSC Cooling Loop)	1	-	-
2	CLARKE Non-Listed JU6H-NL50 (HSC)	1	-	-
1	IE2 2.2 kW 2 Pole IMB3 415V/50Hz/3Ph_ZHEJIANG XIMA	2	-	-
2	IE1 4 kW 4 Pole IMB3 380V/50Hz/3Ph_M2QA_ABB	1	-	-
3	IE1 15 kW 4 Pole IMB3 400V/50Hz/3Ph_M2QA_ABB	1	-	-
4	IE2 30 kW 2 Pole IMB3 380-420V/50Hz/3Ph_TP2-DF200L_Brook	1	-	-
5	IE3 37 kW 2 Pole IMB3 380-415V/50Hz/3Ph_AESV3S_TECO	4	-	-
6	IE1 75 kW 4 Pole IMV1 380V/50Hz/3Ph_CGL	3	-	-
7	IE2 90 kW 4 Pole IMV1 380V/50Hz/3Ph_CGL	2	-	-
8	IE1 160 kW 4 Pole IMB3 380-415V/50Hz/3Ph_M2QA_ABB	1	-	-
1	ARV "Cla-Val" 3450AR-116 Size 1/2"#175 psi	1	-	-
2	ARV "Cla-Val" 3450AR-116.3 Size 1"#300 psi	44	-	-
3	ARV "Cla-Val" 33ATD Size 2" NPT#300 Lb	11	-	-
4	ARV "Kunkle" 20 Size 3/4" NPT	1	-	-
5	ARV "Kunkle" 20 Size 3/4"#50-150 psi	1	-	-
6	ARV "Cla-Val" 34 Series 1"NPT #600psi Non-listed	2	-	-
7	CRV "Cla-Val" 55L-60 Size 3/4"#20-200 psi	65	-	-
8	CRV "Cla-Val" 55L-60 Size3/4"#100-300 psi	80	-	-
9	CRV "Cla-Val" 55F Size 3/4"#250-600 psi	1	-	-
10	Flowmeter "GVI" 1000 GPM 6"-1000-G Grooved	2	-	-
11	Flowmeter "GVI" 1500 GPM 8"-1500-G Grooved	1	-	-
12	Flowmeter "GVI" 2500 GPM 8"-2500-G Grooved	1	-	-
13	Flowmeter "GVI" 3000 GPM 8"-3000-G Grooved	2	-	-
14	Flowmeter "MECON" Turbo-Lux 3 Digital 6" 1000 GPM	2	-	-
15	Flowmeter "MECON" Turbo-Lux 3 Digital 6" 1250 GPM	2	-	-
16	Flowmeter "MECON" Turbo-Lux 3 Digital 6" 750 GPM	3	-	-
17	Flowmeter "MECON" Turbo-Lux 3 Digital 8" 1500 GPM	2	-	-
18	Flowmeter "MECON" Turbo-Lux 3 Digital 8" 2000 GPM	1	-	-
19	Flowmeter "MECON" Turbo-Lux 3 Digital 8" 2500 GPM	1	-	-
20	Flowmeter "MECON" Turbo-Lux 3 Digital 8" 3000 GPM	1	-	-
21	Pressure Gauge 4" Range 0-300 PSI, 1/4", Dry	93	-	-
22	Pressure Gauge 4" Range 0 - 300 PSI, 1/4", Dry	134	-	-

Fire Accessories



No.	Pump Model	KBTL Stock	Stock In Transit	KBL Stock
23	Pressure Gauge 4" Range 0-600 PSI, 1/4", Dry	40	-	-
24	Main Relief Valves "Cla-Val" 2050B-4KG1 3"ANSI 150	3	-	-
25	Main Relief Valves "Cla-Val" 2050B-4KG1 3"#300x150	1	-	-
26	Main Relief Valves "Cla-Val" 2050B-4KG1 4"#150	13	-	-
27	Main Relief Valves "Cla-Val" 2050B-4KG1 4"#300x150	5	-	-
28	Main Relief Valves "Cla-Val" 2050B-4KG1 6"#150	3	-	-
29	Main Relief Valves "Cla-Val" 2050B-4KG1 8" #150	4	-	-
30	Main Relief Valves 2050B-4KG1 6"#300x150	1	-	-
31	Main Relief Valves 2050B-4KG1 6"#300	3	-	-
32	Main Relief Valves 2050B-4KG1 3" #300x150	1	-	-
33	Main Relief Valves 2050B-4KG1 3"ANSI 150	3	-	-
34	Main Relief Valves 2050B-4KG1 4"#300x150	5	-	-
35	Main Relief Valves 2050B-4KG1 6"#150	3	-	-
36	Gear Box Amarillo S100A Ratio 4:3 Fig.1	1	-	-
37	Gear Box Amarillo S100A Ratio 6:5 Fig.1	2	-	-
38	Gear Box Amarillo S125A Ratio 6:5 Fig.1	2	-	-
39	Gear Box Amarillo S125A Ratio 6:5 Fig.1 bored size 38.1 mm.	1	-	-
40	Gear Box Amarillo S200A Ratio 6:5 Fig.1	1	-	-
41	Gear Box Amarillo S150A Ratio 6:5 Fig.1 bored size 42.86 mm.	3	-	-
42	Gear Box Amarillo S200A Ratio 1:1 Fig.1	3	-	-
1	Mechanical Seal "EB" DIN 24960 seal size 30 mm Carbon/Ceramic/Nitrile/SS316	10	-	-
2	Mechanical Seal "EB" DIN 24960 seal size 35 mm Carbon/Ceramic/Nitrile/SS316	7	-	-
3	Mechanical Seal "EB" DIN 24960 seal size 38 mm Carbon/Ceramic/Nitrile/SS316	28	-	-
4	Mechanical Seal "EB" DIN 24960 seal size 40 mm Carbon/Ceramic/Nitrile/SS316	8	-	-
5	Mechanical Seal "EB" DIN 24960 seal size 50 mm Carbon/Ceramic/Nitrile/SS316	7	-	-
6	Mechanical Seal "EB" DIN 24960 seal size 65 mm Carbon/Ceramic/Nitrile/SS316	8	-	-
7	Mechanical Seal "EB" LL9AW for RKB 32 size D28 Carbon/Silicon/Viton/SS316	4	-	-
8	Mechanical Seal "EB" LL9AW for RKB 40 size D32 Carbon/Silicon/Viton/SS316	8	-	-
9	Mechanical Seal "EB" LL9AW for RKB 50 size D36 Carbon/Silicon/Viton/SS316	8	-	-
10	Mechanical Seal "EB" LL9AW for RKB 65 size D40 Carbon/Silicon/Viton/SS316	8	-	-
11	Mechanical Seal "EB" LL9AW for RKB 100 size D44 Carbon/Silicon/Viton/SS316	4	-	-
12	Mechanical Seal "EB" MD251 30 mm SiC/SiC/Kalrez/Hastalloy C (Inboard)-C/SiC/Kalrez/Hastalloy C (Outboard)	1	-	-
13	Mechanical Seal "EB" P13 for KPD Unit 4 size D16 Carbon/Silicon/Viton/SS316	4	-	-
14	Mechanical Seal "EB" P13 for KPD Unit 5 size D20 Carbon/Silicon/Viton/SS316	5	-	-
15	Mechanical Seal "EB" P13 for KPD Unit 7 size D28 Carbon/Silicon/Viton/SS316	2	-	-
16	Mechanical Seal "Rotaserve" for CPHM & KPD Unit no.5 size 24 mm Silicon/Carbon/Viton/SS316	14	-	-
17	Mechanical Seal "Rotaserve" for CPHM & KPD Unit no.7 size 34 mm Silicon/Carbon/Viton/SS316	12	-	-
18	Mechanical Seal "Rotaserve" for CPHM & KPD Unit no.9 size 44 mm Silicon/Carbon/Viton/SS316	2	-	-

Mechanical Seal



Mechanical Seal



No.	Pump Model	KBTL Stock	Stock In Transit	KBL Stock
19	Mechanical Seal for 80x65 KBSH (DE SIDE)	2	-	-
20	Mechanical Seal for 80x65 KBSH (NDE SIDE)	2	-	-
21	Mechanical Seal "EBI" Cartex-SN 33 mm./BQ1VMG	2	-	-
22	Mechanical Seal "EBI" Cartex-SN 43 mm./BQ1VMG	2	-	-
23	Mechanical Seal "EBI" Cartex-SN 53 mm./BQ1VMG	1	-	-
24	Mechanical Seal "AESSEAL" P04U/1.25" Carbon/Ceramic/Viton/SS316	83	-	-
25	Mechanical Seal "AESSEAL" P04U/1.5" Carbon/Ceramic/Viton/SS316	30	-	-
26	Mechanical Seal "AESSEAL" P04U/2" Carbon/Ceramic/Viton/SS316	32	-	-

KIRLOSKAR BROTHERS THAILAND

Kirloskar Brothers (Thailand) Limited and SPP Pumps (Asia) Limited are registered companies in Thailand since 2007 and 2016 that provide fluid management and engineered pumping solutions by various types of pumps and pumping systems in Thailand and Southeast Asia such as Indonesia, Singapore, Vietnam, Laos, Malaysia, etc.

Our Services



PUMP PERFORMANCE TEST

Pump Performance testing at Amata Chonburi Thailand.



ENERGY ENHANCE COATING TECHNOLOGY

According to Hydraulic Institute a pump loses 1% efficiency every year. This can be avoided by coatings and systems upgrades saving energy and maintenance cost.



FIREPUMP.AI

Connected to the onsite controllers via a secure gateway, you'll be able to keep an eye on everything, 24/7 via the cloud and app.

FOR MORE INFORMATION

WWW.KIRLOSKARTHAILAND.COM

ASK@KIRLOSKAR.CO.TH

SPP PUMPS (ASIA) CO.,LTD.

50 Sukhumvit 21 Road (Asoke) GMM Grammy Place Office Building
18 Floor Unit 1805. Khlongtoey-nua, Wattana Bangkok - 10110

Email : asiapacific@sppumps.com

