



# SPP COMPANY PROFILE

*Protecting Life Improving Lives*

**SPP PUMPS (ASIA) LTD.**  
Factory address: 700/711 Moo 1,  
Amata City (Chonburi), Phase 8,  
Phantong, Chonburi 20160, Thailand

## Our Companies



Visit Us

[www.sppumps.com](http://www.sppumps.com)



# History

- **1875** - SPP was founded when a British Engineer bought the patent rights of the Pulsometer Pump from an American, Thomas Hall.
- **1878** - A new company was formed “The Pulsometer Engineering Company Ltd”. With the increase in product range and trade all over the world, a larger factory was found and set up in Battersea, London.
- **1901** - The Company moved from London to new premises in Reading, UK..
- **1961** - Pulsometer Engineering joined the Booker McConnell Group along with another pump company, Sigmund Pumps of Gateshead. This created one of the largest pump companies in Europe, known as Sigmund Pulsometer Pumps, or **SPP**.
- **1986** - SPP acquired Henry Sykes plc in 1986. SPP moved it’s manufacturing site from Reading to a more modern facility in Coleford, in the West of England.
- **1988** - Taken over by the Braithewaite Group. This was followed with SPP being acquired by the TBG group in 1989 and the subsequent incorporation into Sterling Fluid Systems
- **2002 to Present** - SPP separated from the Sterling Fluid Systems Group in 2003 were taken over by their current parent company, **Kirloskar Brothers Limited (KBL)**.

## About SPP

---

SPP Pumps is supplying "Engineered Pumping Solutions Focused on Markets where Application Knowledge, Service and Expertise Add Value"

For more than 130 years SPP Pumps has been a leading manufacturer of centrifugal pumps and associated systems, a global principal in design, supply and servicing of pumps, pump packages and equipment for a wide range of applications and industry sectors.

SPP pumps and systems are installed in all continents providing valuable high integrity services for diverse industries, such as oil and gas production, water and waste water treatment, power generation, construction, mines and for large industrial plants.

Major applications include water treatment & supply, sewage & waste water treatment, fire protection, and mobile pumps for rental sectors, for which our low life cycle cost and environmental considerations are fundamental design priorities.

With over 300 staff worldwide, SPP Pumps main R&D, manufacturing and test facilities are centrally located in a modern purpose built UK facility, whilst local sites operate in the US, France, South Africa, Singapore and Dubai and Thailand

## About SPP

---

All operations are ISO 9001 accredited, and SPP Pumps commits to the ISO 9001-2000 goals of continual improvement for customer satisfaction.

We recently opened the Thai facility in Chonburi operating under SPP Pumps Asia focusing on fire packaging FM/UL as well as NFPPA 20. SPP Pumps Asia will also package for water and industrial pump applications. The ISO 9001 and FM certification is on the way and to be completed by 2018.

SPP Pumps products are supported by an after sales service division in Chonburi that provides care in field service, planned maintenance, spares supply.

SPP's parent company Kirloskar Brothers Limited (KBL) as our Group Company is a world class pump manufacturing company with expertise in engineering and manufacture of systems for fluid management. Established in 1888 and incorporated in 1920, KBL is the flagship company of the \$ 2.1 billion Kirloskar Group.

# SPP PUMPS (ASIA) LTD., Vision

*Including subsidiary KIRLOSKAR BROTHERS (THAILAND) LTD.*



## Vision

SPP Pumps (Asia) Ltd., to be seen as the most innovative, smart (AI / Industry 4.0) and service driven Pump Company in Southeast Asia through the relentless pursuit of both employee and customer delight to deliver pumping technology for a better future.

## Values

- Developing and working with mutual trust
- Building and nurturing teamwork
- Fairness, earnest and honest in dealing with all stakeholders
- Quality in everything we do including superior customer service (Delight)
- Commitment towards environment and sustainability



# Our Brands



## Brand Origin

- India

## Manufacturing

- India

## Assembly/Packaging

- Thailand
- Europe

## Standards

- ISO/ ANSI/ DIN
- FM/ UL
- N Stamp

## Main Products

- End Suction
- Split Case
- Multistage
- Vertical Turbine
- CVP

## Brand Origin

- United Kingdom

## Manufacturing

- India
- UK
- USA

## Assembly/Packaging

- Thailand
- ME

## Standards

- FM/ UL/ LPC/ NFPA20

## Main Products

- End Suction
- Split Case
- Multistage
- Vertical Turbine

## Brand Origin

- USA

## Manufacturing

- USA

## Assembly/Packaging

- Thailand

## Standards

- FM/ UL/ NFPA20

## Main Products

- End Suction
- Split Case
- Multistage
- Vertical Turbine
- Booster Pumps

## Brand Origin

- Netherlands

## Manufacturing

- Netherlands

## Assembly/Packaging

- Thailand

## Standards

- API

## Main Products

- OH2
- OH5
- VS4
- VS5
- CVP
- Engineered Specialized Solutions

## Brand Origin

- Ebara Japan  
*(joint venture with Kirloskar)*

## Manufacturing

- India

## Assembly/Packaging

- Thailand

## Standards

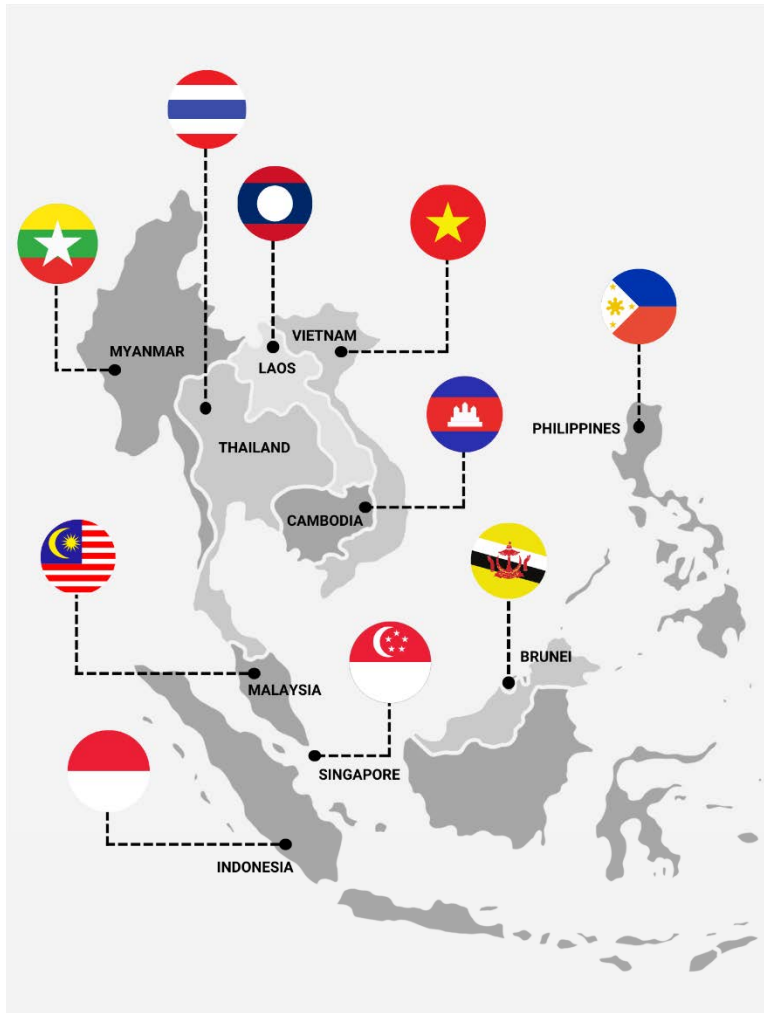
- API

## Main Products

- OH
- VS
- BB
- Steam turbines
- Hydraulic Power Recovery Turbine

# Kirloskar Brothers Regional Setup

*Including subsidiary SPP Pumps Asia & Singapore*



## Thailand

- Kirloskar Brothers Thailand – Bangkok HQ for the ASEAN region for Kirloskar and SPP.
- SPP Pumps Asia – Bangkok

Kirloskar Brothers Thailand – Manufacturing Amata Chonburi common factory for all group brands:

- Kirloskar
- SPP
- Rodelta
- Syncroflo



## Malaysia

- SPP Pumps Asia – Representative Office Malaysia KL

## Singapore

- SPP Pumps Singapore

## Indonesia

- SPP Pumps Asia - Representative Office Indonesia Jakarta

**Further we have an extensive dealer network throughout the Asian Region**



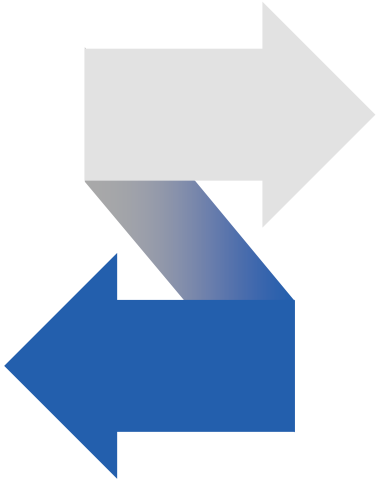
# Our Business

*Large & Medium pumping solutions*  
for complex fluid management system

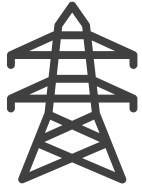
*Small pump*  
for day-to-day use at households and farms.

*Valves*  
for industrial and large-scale applications

*Hydel turbines*



Oil & Gas



Power



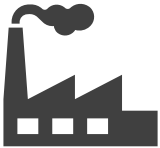
Marine & Defence



Irrigation & Agriculture



Building & Construction



Industrial



Water Resource Management



Customer Service & Spares

# Kirloskar Brothers Thailand Capabilities

*Including subsidiary SPP Pumps Asia*

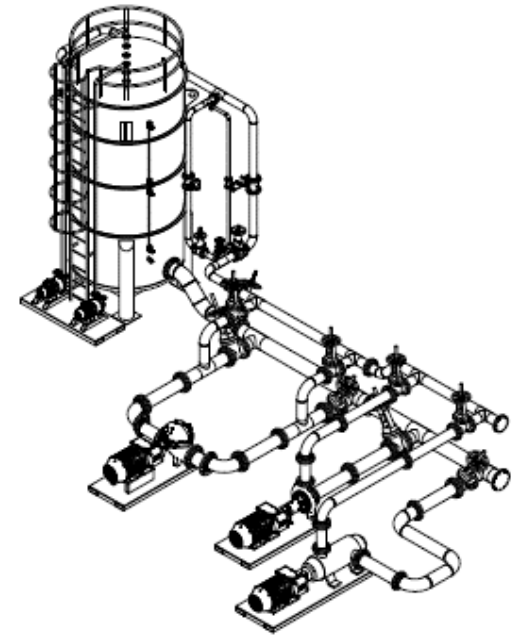


- BOI Promoted facility
- Total floor area : 9,600 m<sup>2</sup>
- Assembly shop with crane capacity up to 15.000 kg
- Hydrostatic testing up to 120 bar
- Repair and Service Area
- Meeting and Training rooms
- Pump sets and UL / NFPA 20 Fire Pump Systems
- Spare part warehouse / on-stock pump program
- Certified welding, fabrication, machining
- Paint Booth and coatings
- Engineering & Design
- Testing pump sets in our test lab up to 500 m<sup>3</sup>/h – 250 kW

# Our Pump Test Bed Setup Up To 250KW Motor



- Horizontal Split Case Pump
  - Multi- Stage Pump High Pressure Loop
  - End Suction Pump
  - Engine Driven Fire Pump
- 
- Flow up to 500m<sup>3</sup>/hr.
  - Pressure up to 100 bar
  - Motor 250Kw



# Pump Performance Test

**Project:** Matarbari Ultra Super Critical Coal-Fired Power Project, Bangladesh

**Owner:** Coal Power Generation Company Bangladesh Limited

**Turnkey EPC:** The Consortium of Sumitomo Corporation, Toshiba Energy Systems & Solutions Corporation, and IHI Corporation

**Client:** United Conveyor Supply Company, USA

## Diesel operated flushing pump for HCSD System

**Qty :** 1 set

**Pump Type:** 125x100 KBSHC(B) x11 STG

**Flow:** 90 m<sup>3</sup>/h

**Head:** 642.6m

**Speed:** 2100 rpm

**Engine model:** Cummins QSL-9

**Engine rating:** 365 HP (272 kW)



# Pump Performance Test



# Manufacturing Capability



Lathe Machine



Slotting Machine



Sawing Machine



Drilling Machine

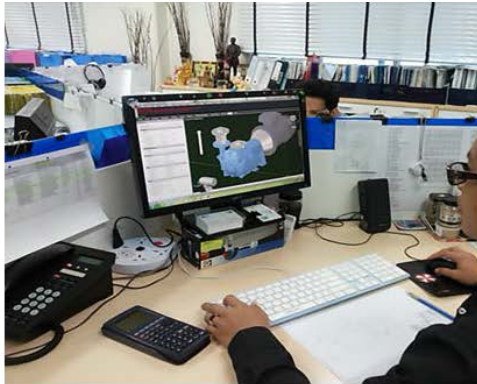


4 Cranes(10T/5T/2T/1T)



Forklift

# Manufacturing Capability



CAD Design Team



Pump Test Bed



Spare Parts Stock



Hydro- Test Repaired Pump



Fabrication



Paint Booth

# Manufacturing Capability



Vibration Meter



Power Meter



US Flow Meter



Induction Heater



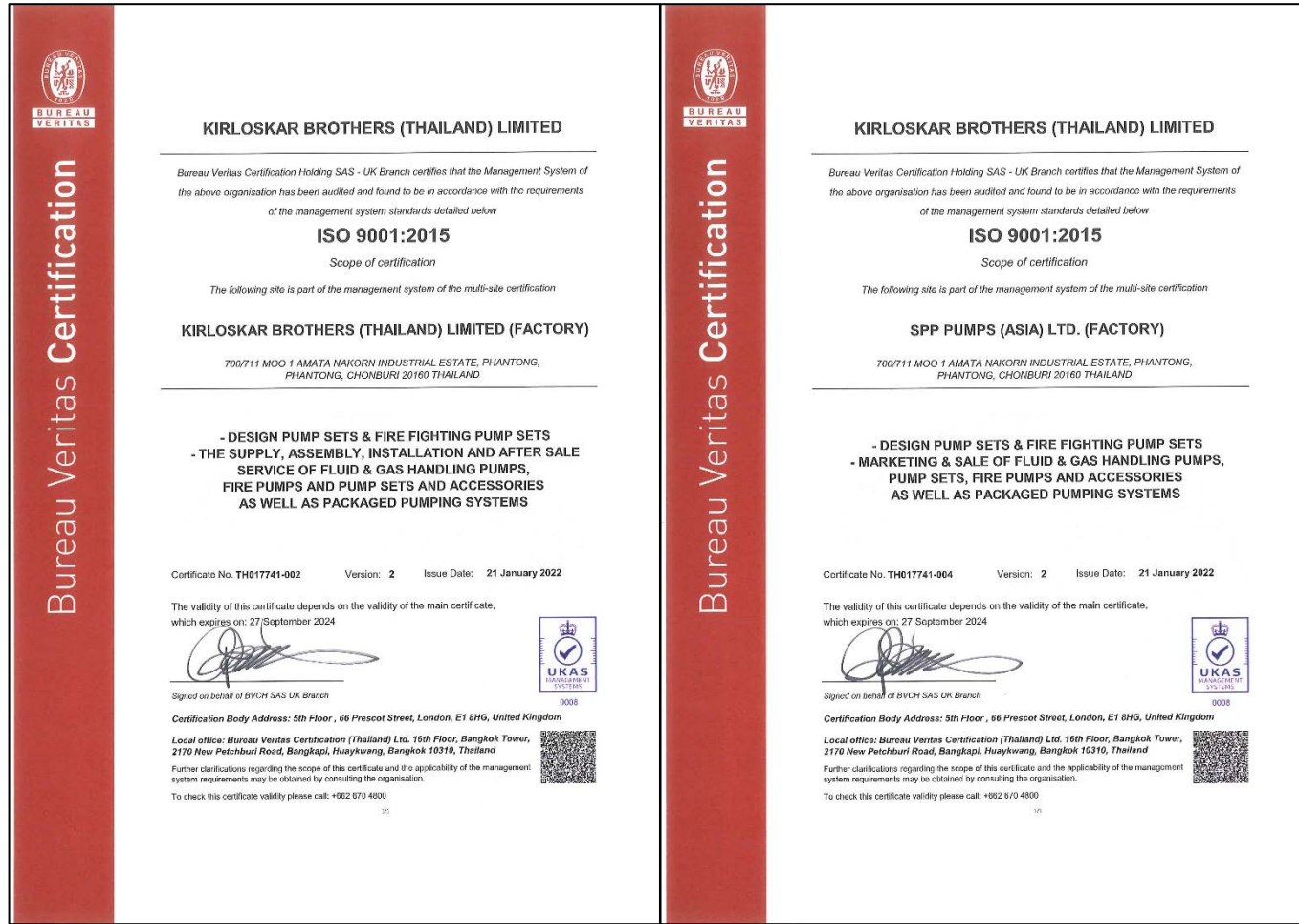
Measuring instrument



Laser Alignment Kit



# Quality in Everything we do



## Focused continual improvement is essential to achieve our desired objectives

- Break-through improvement in Critical to Quality (CTQ) processes through AQIP (annual quality improvement plan)
- Skill enhancement of all team members
- Sound supplier base
- Achieve world class product performance & aesthetics
- Achieve customer delight (internal as well as external)
- Support to plant functions for achieving delivery performance on time in full (OTIF)
- Initiate projects for analyzing critical issues / complaints

# Social Responsibility - Tham Luang Cave Rescue



This is a moment of great joy. The rescue mission to bring out the boys of the Wild Boars football team and their coach from the flooded Tham Luang caves was a complete success, accomplished on 10 July 2018.

How this episode came about was something beyond control and we were all caught by surprise. Search and rescue had to be put together on the spot, right there and then. It's now clear that everyone of us rose to the challenge, in dealing and adapting to the changing demands of the situation. All parts of society pulled together – government, private sector and the general public alike, mustering whatever resources at their disposal, be they physical labour, ideas, donations, and, even, in one case, the ultimate sacrifice of life itself. The group in danger themselves were taking good care of their fellow sufferers in the most admirable manner. The outpouring of sympathy and concern from all corners of the world in support of both the group and their rescuers, were overwhelming. The rescue mission, however hard and arduous it proved, has indeed given rise to something of great beauty whose value is truly beyond measure.

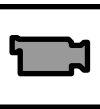
I owe my deepest thanks to every single individual and every single body having a part in this mission. Clearly, there are important lessons to be drawn from this experience. The application of good management, knowledge, and technical expertise in a manner suited to the demands of the situation, are essential keys to success in overcoming obstacles and finding solution, not only in this context but equally, in the great task of national development itself. These essential keys should of course be accompanied by personal qualities of caution, self-discipline, control, and the ability to give one's utmost in working with others. The basic human virtue of helping one another in a spirit of generosity and love, is in itself a power of formidable strength which can make humankind go on living together in an everlasting peace.

*Vajiralongkorn*  
12 July, 2018

# Social Responsibility



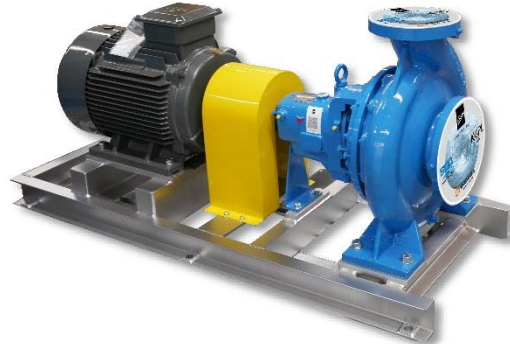
- Phantong communities
- Sawang Auttayan Rescue
- Phantong hospital
- Lorenzo home
- And many more.....



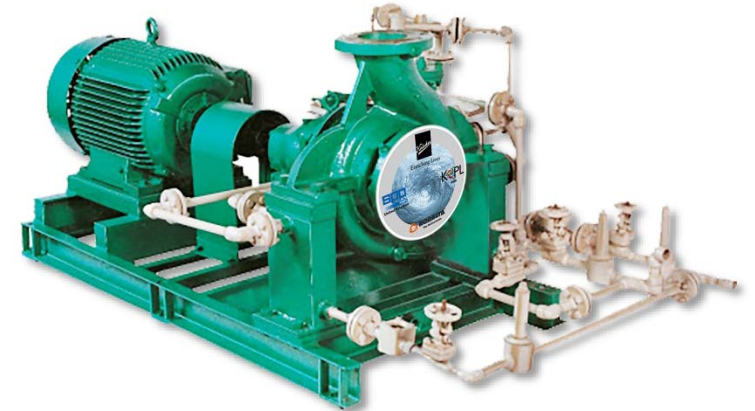
# Our Products



**Split Case**



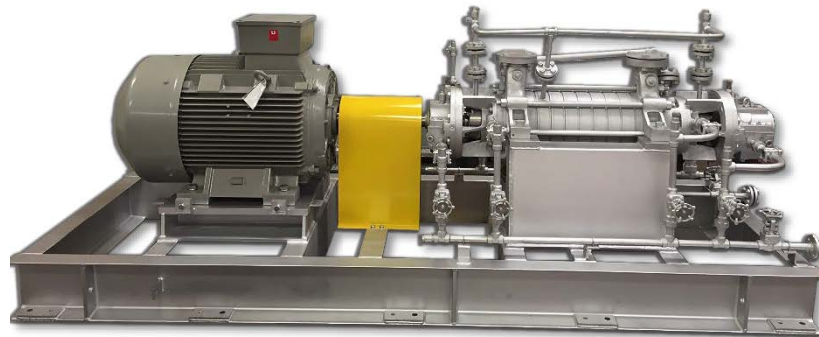
**End Suction DB /MF/GK**



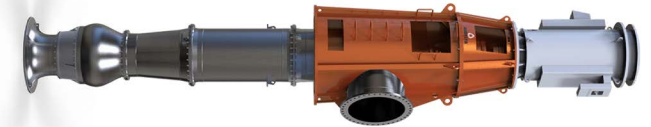
**KPD/ GK (P) Process Pumps**



**SMVR**



**RKB / KBSH Multistage**



**Vertical Turbine  
(BHR/BHQ/BHMa/VEP)**

# Key Products Assembly and Service

## CSS Service

- Services include repair, upgrades, overhaul, energy audit, service contracts, spares
- Start up and commissioning
- 9 FTE



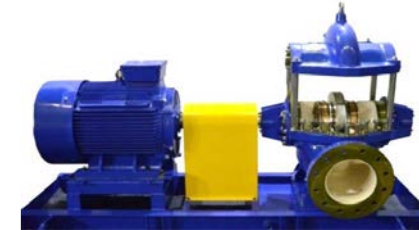
## Fire UL/NFPA 20

- NFPA 20 and none listed fire systems diesel and electric driven
- UL Fire sets with pumps from USA, UK and India and packaged in Thailand
- 3 FTE



## Pump Set Assembly

- Pump set assembly and painting engineered to order by qualified welders
- High end API and Boiler Feed pump system assembly and engineering
- 6 FTE



## iBoost Jockey

- SMV Vertical Multistage Jockey and Booster sets
- State of the art iBoost control system with cloud monitoring
- 2 FTE



# Products Amata - Fire pumps and System NFPA 20 / UL

## Vertical Turbine

Experience gained from extreme environments such as off-shore oil & gas installations has led to the creation Vertical Turbine range of fire pumps approved for fire protection.



## Split Case

Split Case Fire Pumps have been manufacturing fire pumps for over 135 years with one of the widest range of approvals of any manufacturer in the world.



## Jockey

A small pump connected to a fire sprinkler system to maintain pressure in the sprinkler pipes.



## Products Amata - Booster Set

The intelligent monitoring and energy saving pressure booster system. iBoost! is designed to work with 2 up to 6 pumps which brings you reliable, intelligent and energy optimum pump hydro pneumatic pressure booster systems for high rise buildings, commercial complexes, schools and public areas. All our systems can be configured on and offline and monitored in the free cloud service.

### Typical applications

- Sanitary
- Industrial water
- Drinking water
- Small RO based water treatment units



Our iBoost! Phone/Web Application can be utilized to monitor your pump system anytime, anywhere.





## CARTRIDGE

- Reduced installation costs and time
- Easy installation
- Seals are pre-assembled with sleeve and flange in one unit
- No measurements during installation
- Avoid the possibility of axial misplacement and resulting seal performance issues
- Shaft or sleeve is not affected by wear
- Minimum maintenance
- In the long term, cartridge seals are more cost-effective



## COMPONENT

- Component seals are best-suited for users who place a higher priority on a lower upfront cost
- Reduced spares costs as the individual components can be stocked





# KBTL Service Center-Amata



**KBTL** state of the art service center in Amata offers technology and capabilities to deliver fast and integrated solutions to bring pumps back to OEM specification. We have fully equipped service trucks staffed with our trained, well knowledge & qualified service engineers as well technicians to provide you high quality aftermarket service, upgrade to repair or rebuild OEM and non-OEM any type of centrifugal pumps and pumping system with us for customers in Oil & Gas, Power Sector, Steel, Water, Building & Construction, Heavy Industries and Chemical Industries.

Onsite engineering group and experts ensures all projects are completed by highly experienced staff of engineers, project managers, and technicians as well as dedicated craftsmen.

Total commitment to safety and quality.



# Our Service Capabilities



## In-house Service

- Pump Repair any brand, Static Pressure Test
- Performance Test, Failure Analysis Report
- Reverse Engineering with 3D printer,
- Consignment stock , Upgrades, Training



## After Sales Service

- After sales market, AI Remote Services
- Spare parts and management of spares, Service
- Overhaul contracts, 24/7 Arrangements

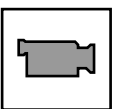


## Site Service

- Pump Installation/ Removal, Pump Alignment
- Pump Commissioning, Site Performance Test, Pump Inspection & MTBF
- Supervision, Site training, **Energy Audits**

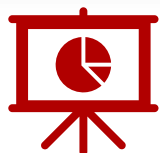


# Fire Pump Monitoring System



# CORE FEATURES

## Dashboard



- Customized to meet your requirement
- Real time derate factor analysis
- Export summary report in CSV, PDF
- Checklist NFPA25 and installation equipment

## Notification



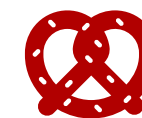
- Instant alerts
- Unlimited receivers
- Predictive maintenance
- Customize calculation and alarm setting

## Security



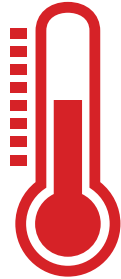
- Secure data storage
- Power backup system for 25 hours
- Gateway UL certify
- Gateway management cloud based
- Historical data trending
- Update as always security path
- Secure environment

## Flexibility



- 24/7 monitoring
- Remote monitoring
- 4G, WIFI, LAN
- Always updated new version
- Seamless update version
- Site-specific fee

# MONITORING OVERVIEW



Temperature Measurement



Engine Status



Battery Status

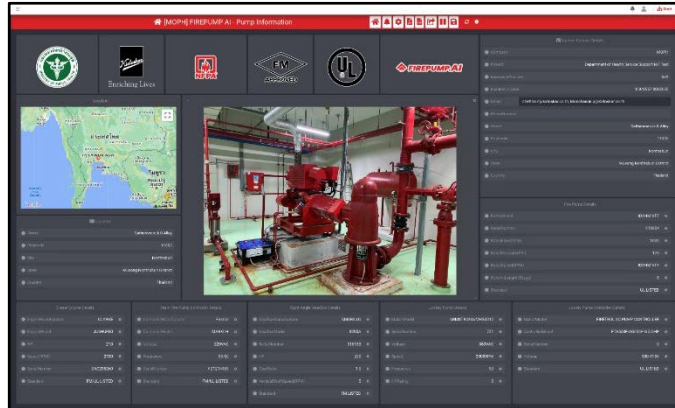


Battery Charger Status



System Status

# INSTALLED AT MOPH



# CORROSION PROTECTION



Blygold helps to corrosion protect your HVAC equipment against corrosion and efficiency improvement coatings for centrifugal pumps to prevent high energy bills, maintenance costs and early replacement.

- HVAC Coil Coating (RTPF)
- Microchannel Coating
- Finned Tube Coating
- Tube Sheet & Water box Cladding
- Cabinet & Casing Coating
- Refurbishment & Rejuvenation
- Pump Coatings for Efficiency Improvement



Without Blygold



Without Blygold



With Blygold

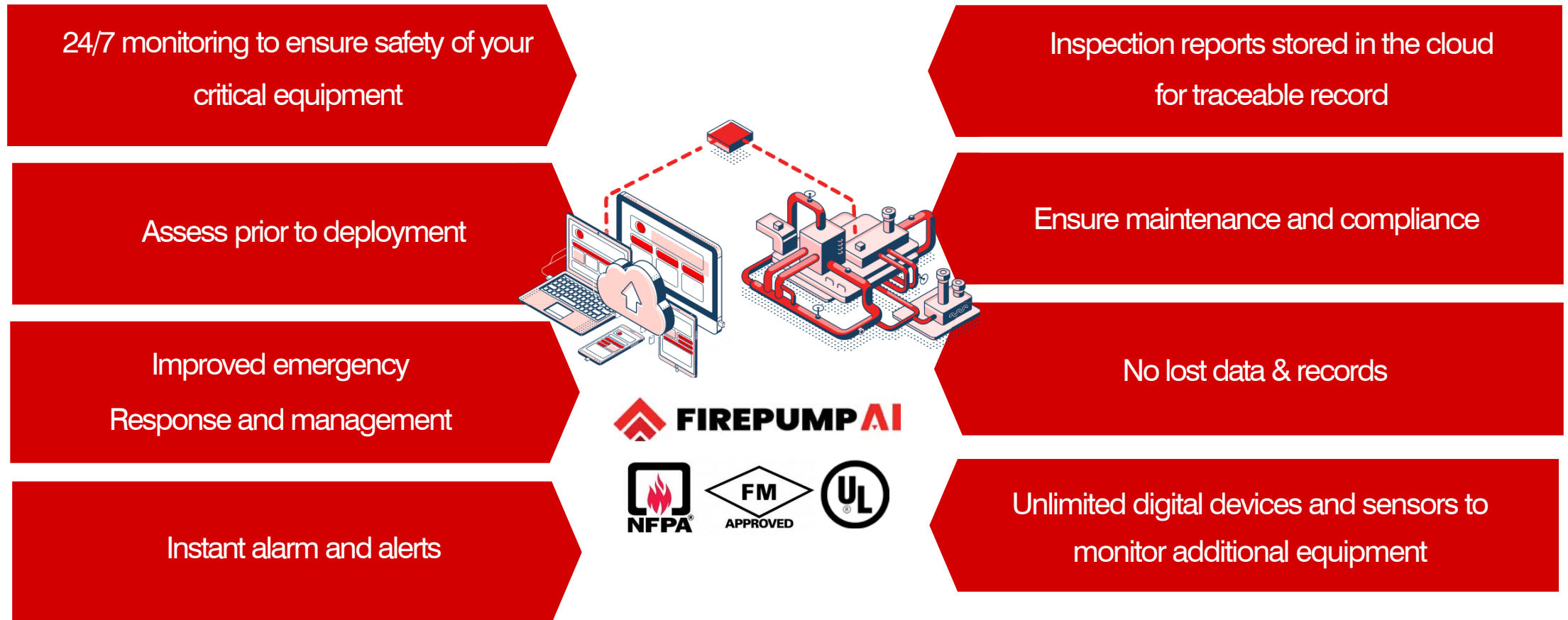


With Blygold





# CUSTOMER VALUE PROPOSITION



# Our Customers


# Qualified Service Vendor for PTTEP



บริษัท ปตท.สำรวจและผลิตปิโตรเลียม จำกัด (มหาชน)  
PTT Exploration and Production Public Company Limited  
A Company of PTT Group

ศูนย์บริการลูกค้าสัมพันธ์ อาคาร A, ชั้น 6, 19-36 Energy Complex Building A, Floors 6, 19-36 Tel : +66(0) 2537 4000  
555/1 ถนนวิภาวดีรังสิต แขวงจตุจักร เขตจตุจักร 555/1 Vibhavadi Rangsit Road, Chatuchak Fax : +66(0) 2537 4444  
กรุงเทพฯ 10900 กรุงเทพฯ 10900, THAILAND www.pttep.com

Global Supply Chain Solutions Department  
Tel.

Date: 28 Jun 2021

KIRLOSKAR BROTHERS (THAILAND) LIMITED  
50 SUKHUMVIT 21 ROAD  
(ASOKE), GMM GRAMMY PLACE  
OFFICE  
BUILDING, WATTANABANGKOK, 10  
110

Attention: Rudrajit Dutta  
Sale Manager

Subject : Qualified

Dear Sir,

PTT Exploration and Production Public Co., Ltd. (PTTEP) is pleased to certify the vendor as follows:

Vendor's Name	KIRLOSKAR BROTHERS (THAILAND) LIMITED	
Ref. Registration No.	PQ/21/0222	
Pre-qualified under Work Category:	99.11.30	Pumps, Centrifugal, Rotary and Parts
This certification letter is valid from 07 Jun 2021 until 06 Jun 2025		



บริษัท ปตท.สำรวจและผลิตปิโตรเลียม จำกัด (มหาชน)  
PTT Exploration and Production Public Company Limited  
A Company of PTT Group

ศูนย์บริการลูกค้าสัมพันธ์ อาคาร A, ชั้น 6, 19-36 Energy Complex Building A, Floors 6, 19-36 Tel : +66(0) 2537 4000  
555/1 ถนนวิภาวดีรังสิต แขวงจตุจักร เขตจตุจักร 555/1 Vibhavadi Rangsit Road, Chatuchak Fax : +66(0) 2537 4444  
กรุงเทพฯ 10900 กรุงเทพฯ 10900, THAILAND www.pttep.com

Global Supply Chain Solutions Department  
Tel.

Date: 24 Aug 2021

KIRLOSKAR BROTHERS (THAILAND) LIMITED  
50 SUKHUMVIT 21 ROAD  
(ASOKE), GMM GRAMMY PLACE  
OFFICE  
BUILDING, WATTANABANGKOK, 10  
110

Attention: Rudrajit Dutta  
Sale Manager

Subject : Qualified

Dear Sir,

PTT Exploration and Production Public Co., Ltd. (PTTEP) is pleased to certify the vendor as follows:

Vendor's Name	KIRLOSKAR BROTHERS (THAILAND) LIMITED	
Ref. Registration No.	PQ/21/0369	
Pre-qualified under Work Category:	26.41.19	Centrifugal / Reciprocation Pumps Maintenance
This certification letter is valid from 17 Aug 2021 until 16 Aug 2025		

# Appreciation Letter



Purwakarta, 18<sup>th</sup> September 2013

## TO WHOMSOEVER IT MAY CONCERN

### TESTIMONIAL CERTIFICATE FOR BOILER FEED WATER PUMPS SUPPLIED BY KIRLOSKAR EBARA PUMPS LTD

We, PT.South Pacific Viscose are pleased to certify that, we are using Boiler Feed Water Pumps model 80 X 65 MSSH 14M, 5 nos. in our plant supplied by Kirloskar Ebara Pumps Ltd. All the pumps are working satisfactorily in line with the design parameters since year 1996.

Authorized signature,



**M.Parsan Chand**  
Sr.Manager Purchase



Date: 27<sup>th</sup> April, 2017

To whom so ever it may concern

**Subject: Appreciation Letter**  
**Project: 150 MW Glow Power Plant, Map Ta Phut, Rayong (Thailand)**

Dear Sir/Madam,  
We are pleased to confirm that the CWP and CEP pump package supplied by Kirloskar Brothers Ltd, through Doosan Heavy Industries Ltd (South Korea) for the above reference project, are in operation since 2009, as mentioned below:

**Circulating Water Pump 2.0 Units**  
Pump Type : Vertical Turbine Pump (BHM85M)  
Flow : 15,000 m3/hr  
Head : 15 meter  
Motor rating/Speed : 875 kW / 490 rpm

**Condensate Extraction Pump 2.0 Units**  
Pump Type : Vertical Canister (BHRc28D)  
Flow : 341 m3/hr  
Head : 200 meters  
Motor rating / Speed : 300 kW / 1480 rpm

The overall product performance, project management and site support services provided by Kirloskar Brother (Thailand) Limited, deserves the highest appreciation.

We shall surely encourage KBL's association for our future projects.

With best regards,



Mr. Wasan Bunharn  
Maintenance Manager  
Coal Fired Units Complex Maintenance

# Our Large Installations

Project : **600 MW Mae Moh CFP Lampang, Thailand**  
 Owner : Electricity Generating Authority of Thailand (EGAT)  
 Turnkey EPC/Client : **Marubeni Corporation turkey EPC / Black & Veatch Corporation**

### Circulating Water Pump 3.0 Units

Pump Type : **VT Pump/BHQ Series**

Flow : **27,800 m3/hr.**  
 Head : 24 meter  
 Speed : 421 rpm  
 Motor rating : **3,300 kW**

### Auxiliary Service Water Pump 2.0 Units

Pump Type : Vertical Turbine

Flow : **5,565 m3/hr.**  
 Head : 28 meters  
 Speed : 740 rpm  
 Motor rating : **575 kW**



# Our Large Installations

Project : **1300 MW South Bangkok CCGT Project** (Thailand)  
 Owner : Electricity Generating Authority of Thailand (EGAT)  
 Turnkey EPC/Client : **Marubeni Corporation (Japan) turkey EPC JV Siemens (Germany)**

**Circulating Water Pump 5.0 Units**

**Pump Type : VT Pump/BHQ Series**

**Flow : 18,900 m<sup>3</sup>/hr.**  
**Head : 21 meter**  
**Speed : 375 rpm**  
**Motor rating : 2,650 kW**

**Make Up Water Pump 2.0 Units**

**Pump Type : Vertical Turbine**

**Flow : 1,800 m<sup>3</sup>/hr.**  
**Head : 16 meters**  
**Speed : 740 rpm**  
**Motor rating : 340 kW**



# Our Large Installations

Project : Khlong Bang Sue Drainage Pumping Station (Bang Sue) Thailand  
 Owner : **Bangkok Metropolitan Administration (BMA)**  
 EPC/Client : NAWARAT PATANAKARN PUBLIC CO. (Thailand)

**Concrete Volute Pump 6.0 Units**

Flow : **36,000 m3/hr.**  
 Head : 15 meter  
 Speed : 325 rpm  
 Motor rating : **1,950 kW**

**Grand Opening by BKK Governor**



# Our References in Power Sector

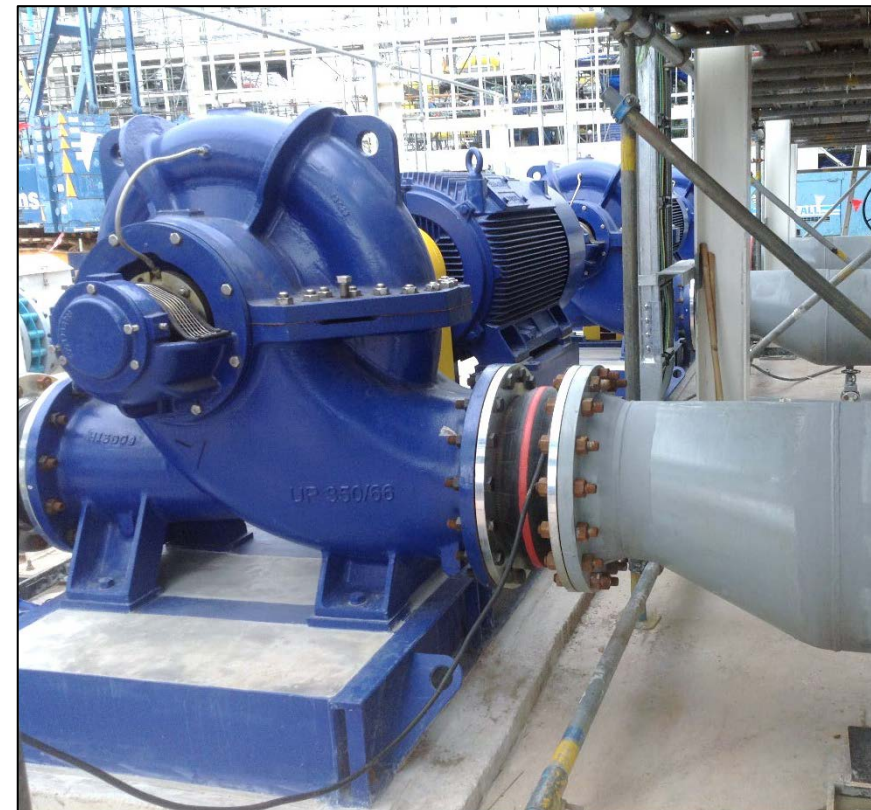
**Customer: LINDE THAILAND PUBLIC CO, LTD** (formerly Thai Industrial Gases PLC.)

Making our world  
more productive



**Cooling Water Pump 2.0 Units**

- Pump Type : Horizontal Split case
- Flow : 1,955 m3/hr.
- Head : 39 meter
- Motor rating/Speed : 275 kW / 994 rpm





# Our References in Power Sector

**Project** : 150 MW Glow Power Plant, Map Ta Phut, Rayong (Thailand)  
**EPC** : Doosan Heavy Industries & Const. Co., Ltd, (South Korea)  
**Customer** : Glow Energy Public Co. Ltd (ENGIE)



## Circulating Water Pump 2.0 Units

**Pump Type** : VT Pump (BHM85M)  
**Flow** : 15,000 m<sup>3</sup>/hr.  
**Head** : 15 meter  
**Motor rating/Speed** : 875 kW / 490 rpm

## Condensate Extraction Pump 2.0 Units

**Pump Type** : VT Canister (BHRc28D)  
**Flow** : 341 m<sup>3</sup>/hr.  
**Head** : 200 meters  
**Motor rating / Speed** : 300 kW / 1480 rpm



# Our References in Power Sector

**Project** : 3x18 MW Thermal Power Plant, Sangatta (Kalimantan east)  
**EPC Contractor** : PT Punj Lloyds Indonesia  
**Owner** : PT Citra Kusuma Perdana (Indonesia)

**Circulating Water Pump 4.0 Units**

**Pump Type** : Horizontal Split Case  
**Flow** : 4,800 m<sup>3</sup>/hr.  
**Head** : 35 meter  
**Speed** : 980 rpm  
**Motor rating** : 650 kW

**Make Up Water Pump 2.0 Units**

**Pump Type** : Vertical Turbine  
**Flow** : 600 m<sup>3</sup>/hr.  
**Head** : 10 meters  
**Speed** : 1,480 rpm  
**Motor rating** : 30 kW

**Total Pumps installed in Power plant : 32 Pump sets**



# Our References in Water Sector



**Project** : Rainage pumping station Ekkamai  
**Owner** : Bangkok Metropolitan Administration (BMA)

**Circulating Water Pump 6.0 Units**

**Pump Type** : Vertical turbine type  
 (special design for under water operation)  
**Pump model** : BHQ50  
**Motor rating** : 130KW, IP67 rating motor  
 (Special design for under water operation)



# Our References in Water Sector



**การประปาส่วนภูมิภาค**  
**Provincial Waterworks Authority**

Provincial Water Authority - Pattaya



# Our References in Industry

**Customer: INDORAMA PETROCHEM LIMITED RAYONG, THAILAND**

**Cooling Water Pump 5.0 Units**

Pump Type : Horizontal split case  
Flow : **6,000 m<sup>3</sup>/hr.**  
Head : **35 meter**  
Motor rating/Speed : 950 kW / 746 rpm



# Our References in Industry

*Including subsidiary SPP Pumps Asia*



**TATA STEEL (THAILAND)**

Horizontal & End Suction Pumps  
(50 Units) are in operation at **NTS Tata Steel**



# Our References in Industry



Horizontal & End Suction SCT and KPD Pumps  
(150Units) are in operation at  
**Thai Rayon, Anghong.**



# Our References in Firepump

Project : **MRT PINK & YELLOW LINE PROJECTS in BANGKOK THAILAND**  
 Owner : **Mass Rapid Transit Authority of Thailand (MRT)**  
 Turnkey EPC/Client : **Sino-Thai Engineering & Construction Public Company Limited**

**Vertical Turbine pump 108 Units**

**Pump Type : BHR series**

Model Name : BHR 24A  
 Flow : 750 USGPM  
 Pressure : 120 to 125 psi  
 Speed : 1500 rpm  
 Drive : Electric Motor

Model Name : BHR 21C  
 Flow : 750 USGPM  
 Pressure : 120 to 125 psi  
 Speed : 1760 rpm  
 Drive : Diesel Engine 98 HP

**Horizontal split case 6.0 Units**

**Pump Type : FR series**

Flow: 750 – 2,500 USGPM  
 Pressure: 105 to 150 psi  
 Speed: 3000 rpm / 2100 – 3000 rpm  
 Drive: Electric Motor 75 – 300 HP /Diesel Engine 83 – 3600 HP





# Protecting Life Improving Lives

## **SPP PUMPS (ASIA) LTD.**

A Kirloskar Group Company

**Office:** 50 Sukhumvit 21 Road, GMM Grammy Place Office Building, 18th floor, Unit 1805, Khlongtoey-nua, Wattana, Bangkok 10110S

**Factory:** Amata Nakorn Industrial Estate (Phase 8), 700/711 Moo 1, Phan Thong, Phan Thong, Chonburi 20160

**Email:** ASIAPACIFIC@SPPPUMPS.COM